



WELCOME | Phase 5 Open House

This is one of four open houses being held as part of Phase 5 of the UBC Vancouver Campus Plan Review. From October 5 - October 22, 2009, UBC Campus + Community Planning is consulting with the campus community and other stakeholders to find out what you think about the draft Campus Plan. When finalized, this plan will guide development of UBC Vancouver's academic lands from 2010 through to 2030.

Phase 5 Open House Schedule

Date	Time	Location
Wednesday, Oct. 14	1 p.m. - 4 p.m.	Life Sciences Centre, Atrium 2350 Health Sciences Mall
Thursday, Oct. 15	9 a.m. - 12 p.m.	Leon and Thea Koerner University Centre, Penthouse Room 6331 Crescent Road
Tuesday, Oct. 20	5 p.m. - 8 p.m.	Michael Smith Laboratories, Room 101 2185 East Mall
Wednesday, Oct. 21	12 p.m. - 4 p.m.	Student Union Building, Concourse 6138 Student Union Boulevard

At this open house, you will have an opportunity to:

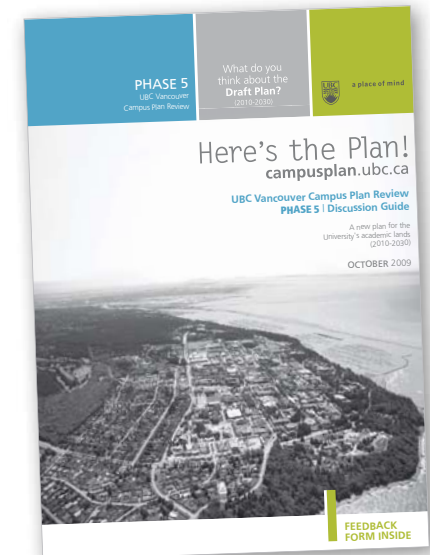
- Meet with UBC Campus + Community Planning staff
- Learn more and ask questions about the UBC Vancouver Campus Plan Review and the draft Campus Plan
- View consultation materials, including the Phase 5 Discussion Guide and Feedback Form, and the draft Campus Plan
- Provide feedback on the draft Campus Plan

How will feedback be used?

Feedback gathered during Phase 5 will be recorded and summarized in a Consultation Summary Report, which will be considered, along with technical studies, to finalize the Plan. In early 2010, the Final Plan will be presented to the UBC Board of Governors.

Both the Phase 5 Consultation Summary Report and the Final Plan will be made available online at www.campusplan.ubc.ca.

The deadline for Consultation feedback is midnight, Thursday, October 22, 2009.





WHY WE NEED A CAMPUS PLAN

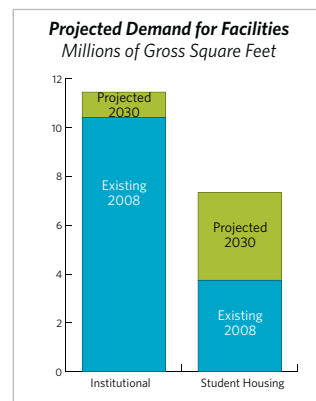
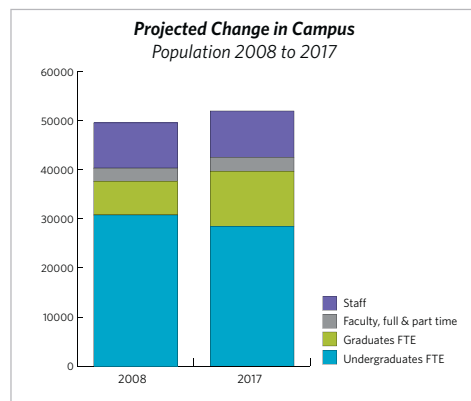
UBC Vancouver needs a Campus Plan to:

- Accommodate a modest increase in demand for academic facilities
- Make room for a near doubling of capacity for student housing
- Provide more services on campus for residents and commuters
- Improve design and condition of public realm
- Contribute to building and maintaining a more sustainable campus

Over the next 20 years, the Campus Plan will guide the physical setting where the University's activities take place by establishing integrated land use policies and design standards for all land use, buildings, infrastructure and open space.

Expected Changes in Campus Population to 2030

- Modest growth in campus population; student enrolment capped at 2017 levels
- With more emphasis on research, expect near doubling of graduate students



Future Needs to 2030

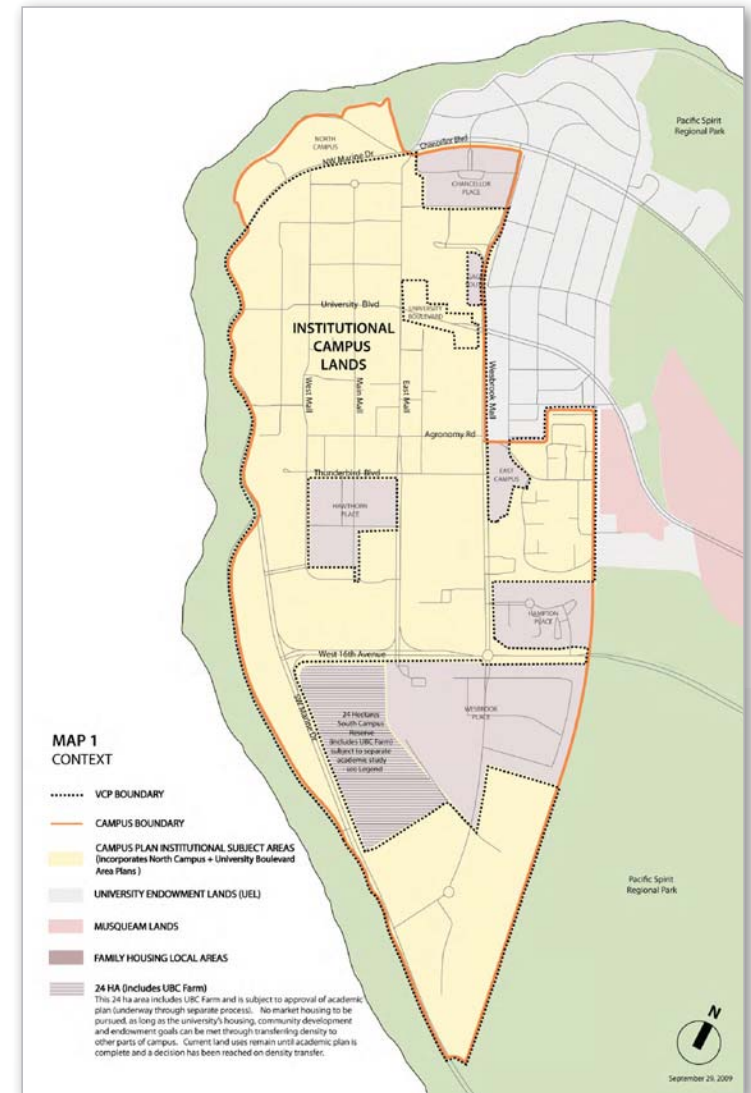
The Campus Plan only sets aside space; actual development is subject to demand and funding on a project by project basis.

New Institutional Facilities

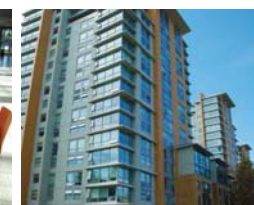
- About a 10% increase in floorspace
- Includes academic, social space, services and operations

New Student Housing

- Near doubling of capacity to meet goal of housing 50% of full time students on campus.



UBC students study over lunch in the atrium of the Life Sciences Centre



Marine Drive Residence accommodates over 1,600 students



Newly renovated Thunderbird Park with Wesbrook Place in the background



CAMPUS PLAN REVIEW | Your Ideas Helped Shape the Campus Plan

The following **Vision Statement** was developed through consultation with the UBC community:

The UBC Vancouver Campus Plan will support UBC's world-class community of scholars with a campus that physically reflects the stature of the university, provides the optimal environment for teaching, learning and research, and encourages a unique community life; and with a campus that is beautiful, functional, sustainable, cost-effective, connected to its neighbours and responsible to future generations.

-Endorsed by the UBC Board of Governors, May 2007

MAIN THEMES FROM CONSULTATIONS	MAIN STRATEGIES IN CAMPUS PLAN
<ul style="list-style-type: none"> • Continue to be leader in campus sustainability • Support the academic mission of UBC • Create a more lively campus • Improve the character of the campus • Improve circulation around campus and movement to and from campus 	<ul style="list-style-type: none"> • <i>Create a Sustainable Campus</i> • <i>Provide a Campus for World Class Teaching, Learning, & Research</i> • <i>Nurture a More Vibrant & Interesting Campus for UBC's Community of Scholars</i> • <i>Rediscover UBC's Sense of Place & Natural West Coast Beauty</i> • <i>Ensure a Better Connected & Accessible Campus</i>



Phase 5 Campus Plan banner hangs from the Ladner Clock Tower

A detailed description of how input was considered in developing the draft Campus Plan can be found in the *Consideration Memo of Consultation Input*, prepared by UBC Campus + Community Planning (September 2009). This document is available online at www.campusplan.ubc.ca.



Pedestrian traffic on Main Mall



Informal study space



Atrium of the Forest Sciences Centre



Students relax in the sun on the grassy knoll outside the Life Sciences Centre



UBC Vancouver Campus Plan Review Phase 5

6 PHASE PROCESS The Campus Plan Review has six phases comprising technical studies and consultation with the campus community and other stakeholders. We are now in Phase 5 - *Here's the Plan!*

	Technical Work	Community Consultation
1 Phase 1: Initiating the Plan 2006	<ul style="list-style-type: none"> Defining scope and budget Planning Process Development Consultation Alternatives Existing Policy Framework Analysis 	<ul style="list-style-type: none"> Initial Workshop
2 Phase 2: Identifying Issues and Ideas 2007	<ul style="list-style-type: none"> Open Space Assessment Built Form and Heritage Review Access and Movement Analysis Policy Review 	<ul style="list-style-type: none"> Campus Community Outreach 1992 Main Campus Plan Retrospective Issues and Ideas Workshops Campus Plan Website 6 Big Questions and Blogs Phase 2 Consultation Summary Report
3 Phase 3: Talking About The Future 2007	<ul style="list-style-type: none"> Speaker's Series: <i>Teaching, Learning and Research; Placemaking; Campus and Student Life; Campus Architecture and Urban Design; The Sustainable Campus</i> Comparative Campus Planning & Development Study Vision and Outcomes Statement Academic Development Scenario 	<ul style="list-style-type: none"> Campus Community Outreach Focus Group Discussions Campus Plan Website 6 Big Questions and Blogs Phase 3 Consultation Summary Report
4 Phase 4: Options Review 2008	<ul style="list-style-type: none"> Social and Ecological Sustainability Assessment of UBC Campus Plan Options Financial Impact Analysis Sustainable Campus and Long Term Visioning Campus Plan Key Directions Public Realm Improvement Plan GIS Database of Campus and Visualization and Analysis Model South Campus Bioscience and Research Precinct Land Use Plan UBC Gateway Study 	<ul style="list-style-type: none"> Campus Community Outreach Policy Roundtables UBC Farm Principles Online Feedback Form Options Review Workshops Open Houses Discussion Guide and Feedback Form Campus Plan Website Online Feedback Form Phase 4 Consultation Summary Report
5 Phase 5: Draft Plan 2009	<ul style="list-style-type: none"> Consolidate Background Materials Draft Campus Plan Design Guidelines UBC Historical Context and Themes Student Housing Demand Forecasts 	<ul style="list-style-type: none"> Campus Community Outreach Open Houses Discussion Guide and Feedback Form Campus Plan Website Online Feedback Form Phase 5 Consultation Summary Report
6 Phase 6: Adopt the Plan 2009	<ul style="list-style-type: none"> Final Campus Plan Board of Governors Approval of Final Plan 	



A Main Strategy of the Campus Plan

CREATE A SUSTAINABLE CAMPUS | Land Use, Buildings & Open Space

The Campus Plan will create a more sustainable campus by:

- Providing capacity for more student housing on campus
- Achieving efficient, effective, and convenient land use distribution patterns
- Supporting transportation alternatives to automobile traffic
- Developing integrated approaches to managing open space, energy, and infrastructure systems

Greener Buildings and Sites

- Minimum LEED Gold certified standard, encourage LEED Platinum certified
- Integrate new facilities with the improved public realm, stormwater management features and more native plants

Supporting Other Sustainability Initiatives

Supporting the spatial needs of other initiatives to maximize their effectiveness

- Climate Action Plan
- Alternative Energy Study
- Sustainability Academic Strategy: "Campus as a Living Lab"
- South Campus Academic Sustainability Plan
- UBC Sustainability Plan Update

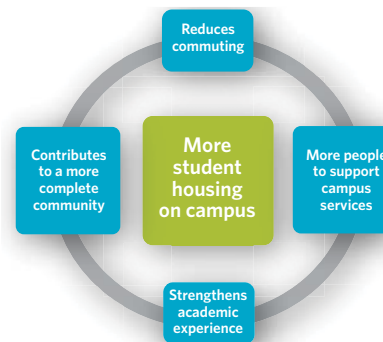


The Centre for Interactive Research on Sustainability (CIRS) will open in 2011 at the corner of West Mall and Sustainability Street

The **South Campus Academic Plan** must be for teaching and research purposes that are academically rigorous and globally significant around issues of sustainability, and enhance UBC's position as Canada's most sustainable university and a recognized world leader in campus sustainability

Source: UBC Public Affairs, Dec. 1, 2008

Increasing the capacity for student housing is central to achieving other goals for campus



More effective land use supports walking and cycling



Green roof at the Beaty Biodiversity Centre



Sustainability Street showcases UBC's achievements in sustainable urban design



New co-development housing in Wesbrook Place overlooking Smith Park



Bio-swale on West Mall



A Main Strategy of the Campus Plan

CREATE A SUSTAINABLE CAMPUS | Infrastructure

The Campus Plan will develop integrated approaches to managing open space, energy and infrastructure, including:

Using Rain Water as a Resource

- Unique hydrogeology and cliff-erosion conditions limit where stormwater management strategies can be pursued on campus
- Rain gardens and bio-swales will be integrated into road redesign and parking lots
- Stormwater will be used for irrigating campus landscapes to reduce potable water use, where possible

Using Integrated Planning

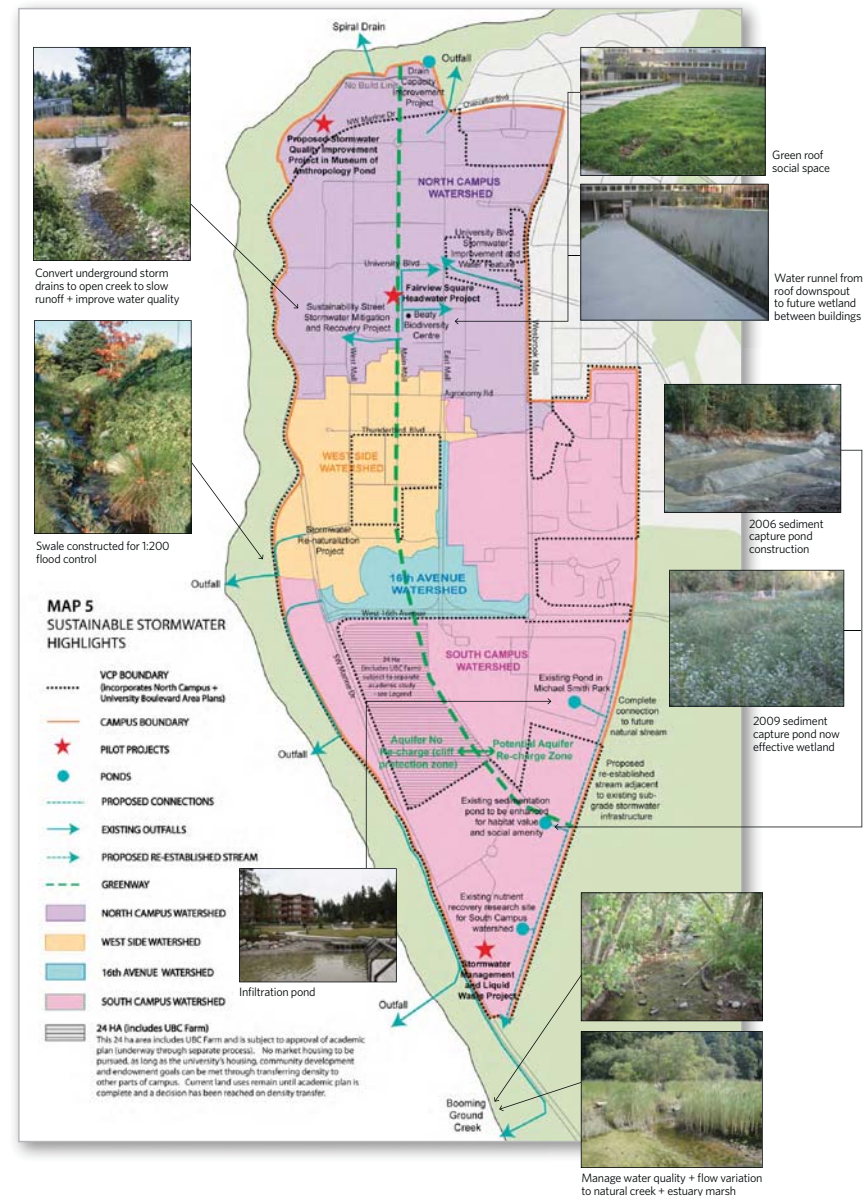
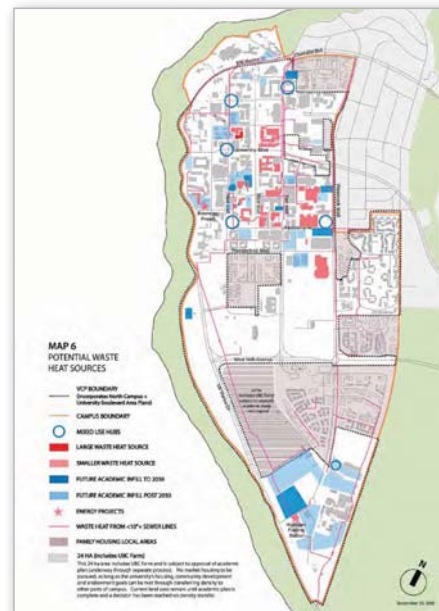
- Provide space for district energy systems in mixed-use hubs
- Consider heat sharing or recovery in new projects

Updating Existing Infrastructure Plans

- Include effects of sustainability initiatives and Campus Plan on water, sewerage, electrical, and solid waste plans

Increasing Understanding

- Promote an understanding of infrastructure systems by increasing their transparency





A Main Strategy of the Campus Plan

PROVIDE A CAMPUS TO SUPPORT WORLD CLASS TEACHING, LEARNING & RESEARCH

The Campus Plan supports world class teaching, learning and research by:

- Accommodating growth and renewal of state of the art teaching and research facilities
- Using the campus as a living laboratory for teaching, learning and research
- Fostering academic interaction between students and faculty

Meet Demand for Future Teaching and Academic Facilities by:

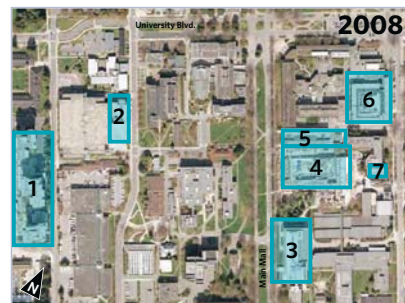
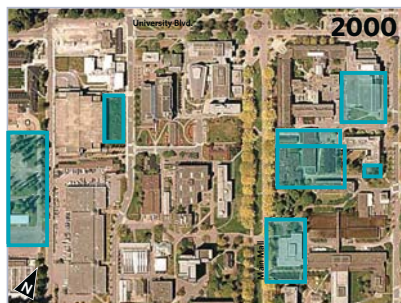
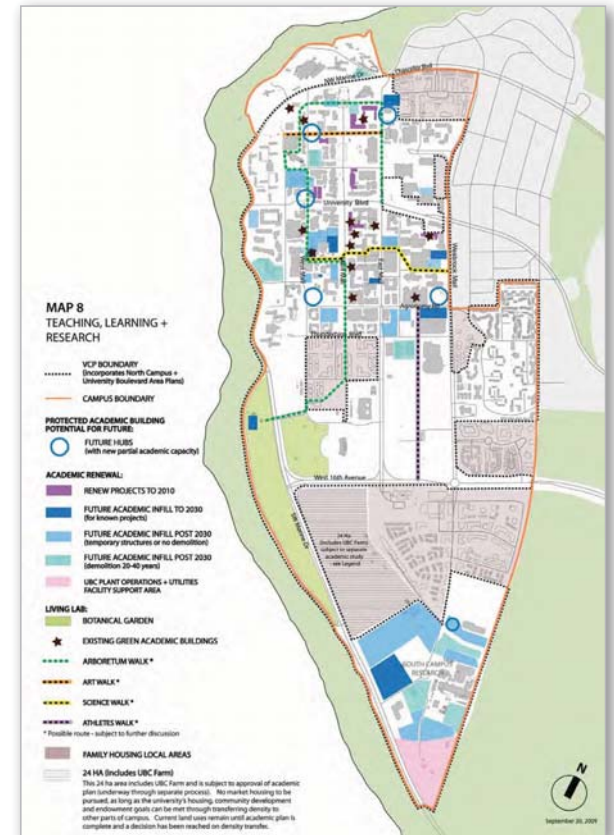
- Renewing and renovating where practical
- Using infill sites and higher density within core campus
- Protecting South Campus sites for future academic and research uses

Campus as a Living Lab by:

- Using the campus infrastructure, buildings and open space for sustainability-related teaching, learning, and research
- Piloting projects on stormwater, energy, and food production
- Designing outdoor group seating to facilitate teaching out of the classroom
- Creating "Knowledge Walks" to showcase academic and research activities within buildings and outdoors

Foster Academic Interactions by:

- Creating hubs with informal learning and social spaces to complement student housing and academic uses
- Improving spaces within the public realm to better support academic uses



Recent Examples of Academic Facilities and Student Residences built on Infill Sites

1. Marine Drive Residence
2. West Mall Swing Space Building
3. Fred Kaiser Building
4. Beaty Biodiversity Centre
5. Aquatic Ecosystems Research Laboratory (AERL)
6. Michael Smith Laboratories
7. Food, Nutrition and Health Building (Addition)



Elementary school students on a field trip at the Museum of Anthropology

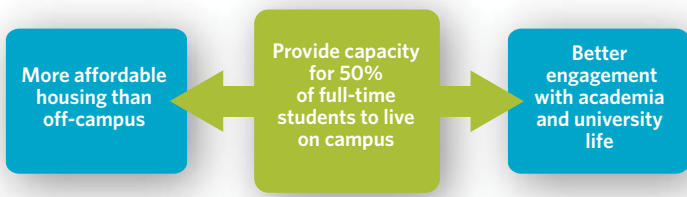
A Main Strategy of the Campus Plan

NURTURE A MORE VIBRANT & INTERESTING CAMPUS FOR UBC'S COMMUNITY OF SCHOLARS

The Campus Plan supports a safe, interesting, and more vibrant campus by:

- Accommodating more capacity and variety of housing for students on campus
- Enlivening the campus core with uses that encourage people to gather and either study or socialize, and that support more activities
- Creating localized hubs from which students, faculty and staff can experience the larger university life
- Animating the campus with more facilities to sustain the daily needs of students, faculty and staff

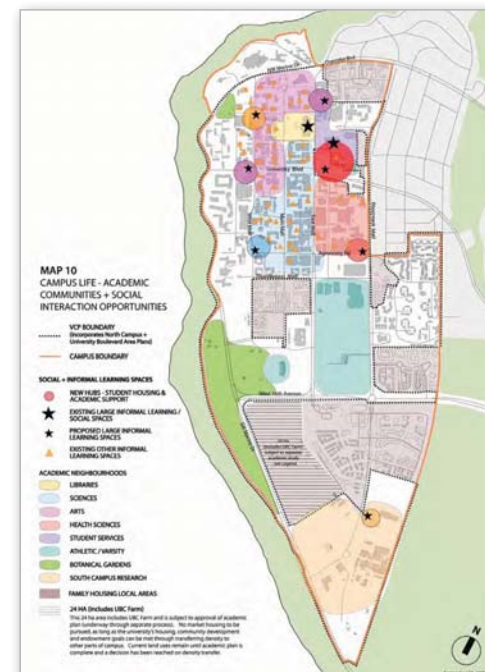
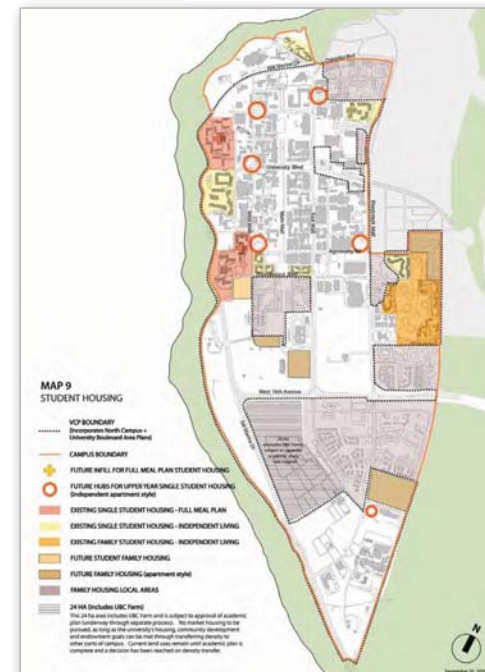
Student Housing



Students working at new tables and benches outside the Irving K. Barber Learning Centre

Campus Life

- New hubs will have a mix of student housing, social, and recreational infrastructure and academic facilities, including:
 - Ample indoor/outdoor public seating and social spaces
 - Services at ground level to meet daily campus needs: meeting rooms, convenience and food services, child care, and end-of-trip bicycle facilities
 - Community shuttle stops
- Improved facilities throughout the core campus will support safety, health and wellness
 - Small fitness centres and other outdoor or indoor recreation facilities
 - Public realm upgrades to encourage more walking and cycling
 - Improved night lighting, especially on key pedestrian corridors
- Continue to develop University Boulevard neighbourhood, including University Square, as the heart of the campus



A Main Strategy of the Campus Plan

REDISCOVER UBC'S SENSE OF PLACE & NATURAL WEST COAST BEAUTY

The Campus Plan will help rediscover UBC's sense of place and natural west coast beauty, and enhance UBC's campus character by:

- Improving the cohesiveness of the design of campus buildings and landscapes
- Accentuating UBC's natural west coast beauty and setting
- Ensuring the campus reflects the quality and stature befitting a world class university

Cohesiveness

- The Campus Plan will define three major character districts based on architectural, landscape and academic commonalities: *Historic Beaux Arts Grid*, *Modernist Campus*, and *Forested Campus*
- The choice of landscape and architectural materials, as well as building heights and set backs from the streets will reinforce these character districts

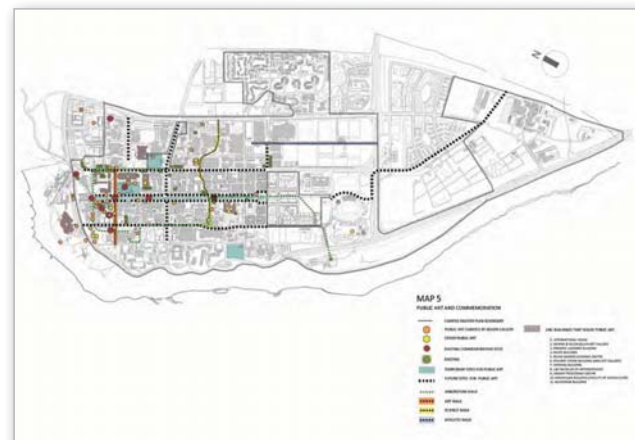
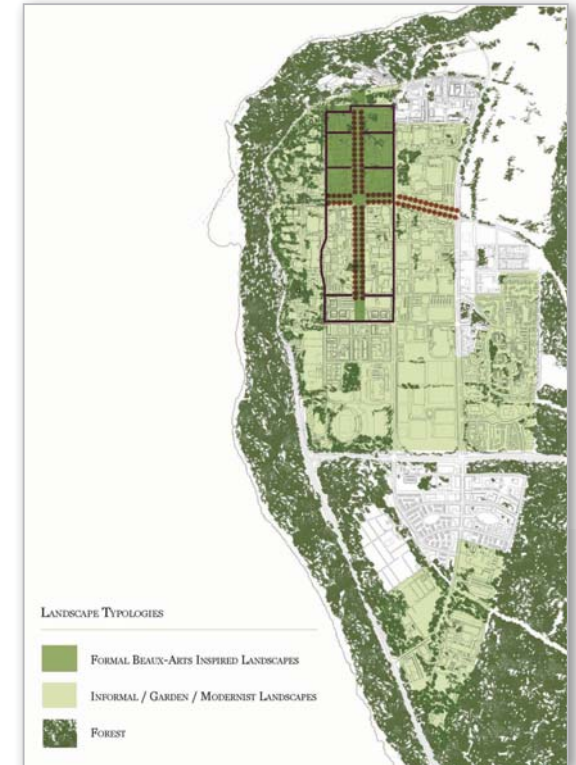
Natural West Coast Beauty

- Capture celebrated views from the western edge of campus
- Design strong indoor-outdoor relationships between new buildings and their surroundings

World Class Campus

The Campus Plan encourages a campus quality and stature befitting a world-class university by:

- Creating "Gateway" facilities to support positive and memorable arrival experiences
- Encouraging displays of high-quality art in prominent locations
- Defining the best ceremonial routes for special occasions
- Conserving and managing buildings, artifacts and landscapes that reflect important historic/cultural themes from UBC's past



A Main Strategy of the Campus Plan

REDISCOVER UBC'S SENSE OF PLACE & NATURAL WEST COAST BEAUTY

The Campus Plan will help rediscover UBC's sense of place and natural west coast beauty, and enhance UBC's campus character by:

- Protecting an open space network
- Improving the design and condition of the public realm
- Introducing design guidelines that establish landscape and architectural standards for new campus projects



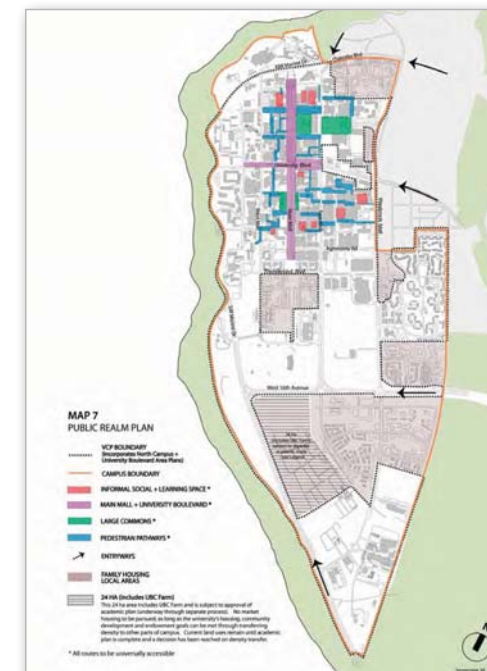
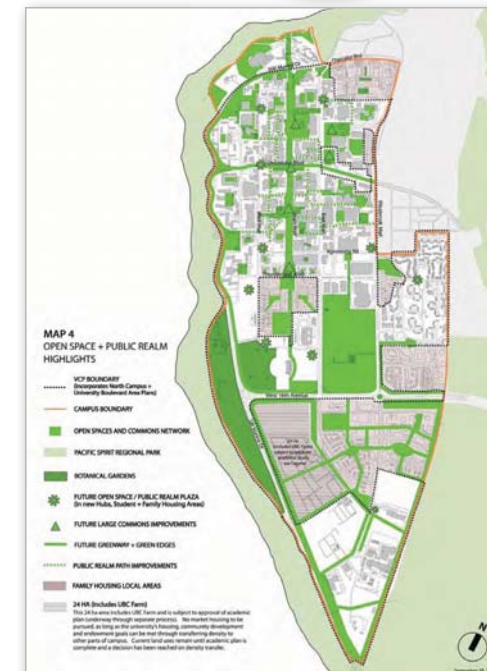
Cherry trees in bloom along Lower Mall



An artist's rendering of proposed plans for Main Mall near Hawthorn Place



Night lighting between Beaty Biodiversity Centre and AERL



Public Realm

Over the next 15 years, the Public Realm Plan will focus on capital improvements for the following elements:

- **Organizing Spines:** A new ornamental water feature where Main Mall and University Boulevard intersect
- **Large Commons:** New Fairview Square, revitalized Library Gardens, and completion of the Main Mall Commons as examples
- **Small Informal Social and Learning Spaces:** More intimate spaces developed between buildings for each major block or precinct
- **Pathway links:** New pathways to interconnect outdoor spaces and foster impromptu interaction
- **Gateways:** To better express UBC's identity

Landscape

- Bring coherence to the campus through simplified landscape designs and paving patterns, materials and lighting infrastructure. See details on **Highlights of Campus Design Guidelines** board.

CAMPUS DESIGN FRAMEWORKS

Design Guidelines will be used by architects, landscape architects and engineers in designing buildings, landscape and infrastructure projects. The Guidelines use overlapping spatial “Frameworks” to define the character and sense of place for the Vancouver campus.

Topography and Prospect

- Main Mall is aligned along the ridgeline or “hog’s back” with its highest point near the intersection with University Boulevard.
- The Design Guidelines strengthen the experience of the ridge and view opportunities.

Landscape Typologies

- Three landscape typologies, or character districts, together create the University’s spirit of the place.
- The Design Guidelines will reinforce the formality and symmetry of the historic core and bring informal simplicity to the remaining campus where modernist and contemporary landscape ideas predominate.

Corridor Structure & Hierarchy

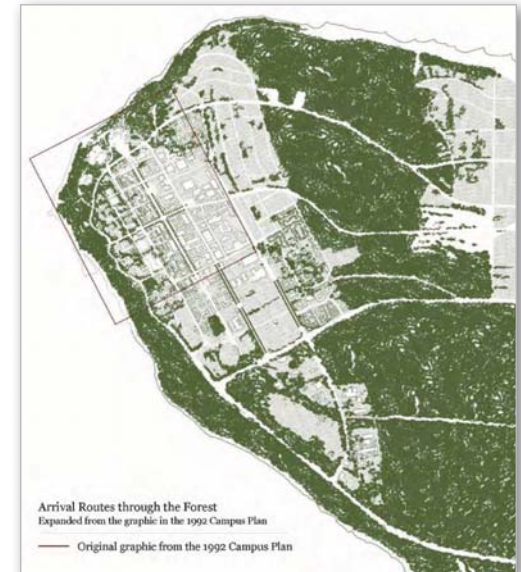
- A unifying structure of the UBC Vancouver campus is the grid of malls and perpendicular roads. At a finer scale, many pedestrian pathways offer choices for moving between destinations.
- The Design Guidelines will define:
 - How to reinforce the hierarchy of corridors by using design and materials
 - How to fully connect campus pathways and make them more easily found

Commons

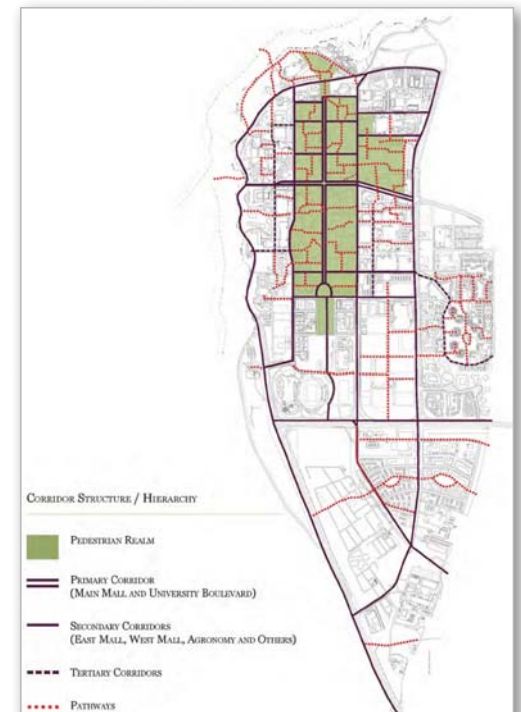
- The large commons address the needs of the entire university community and local commons serve the needs of people in the immediate area.
 - The Design Guidelines will identify how to make these areas more attractive and usable.
 - Local commons can become learning landscapes that reveal the cultures and knowledge of their user groups.

Gateways and the Arrival Experience

- The experience of moving through the forest to reach the campus is key to its sense of place as separate from the city and embedded in nature.
- The Design Guidelines will define the sequence of experiences that create gateways for all modes of travel.



Gateways and the Arrival Experience



Corridor Structure & Hierarchy

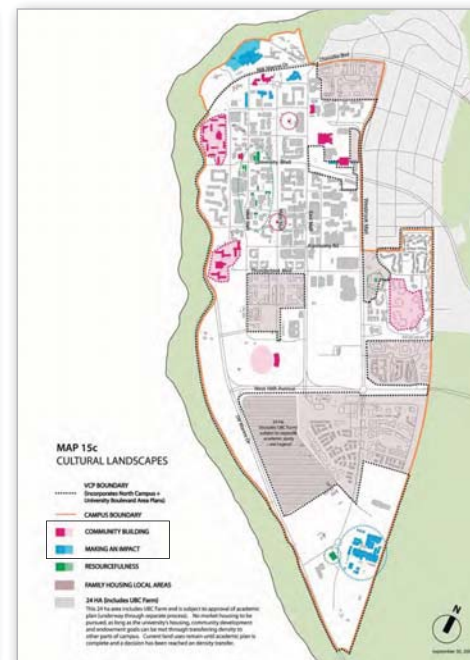
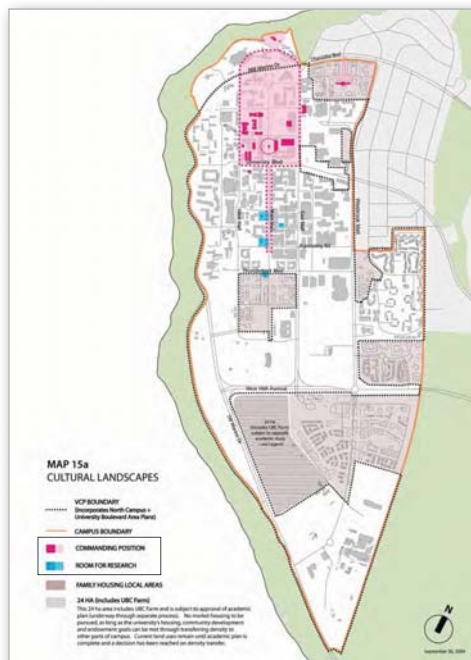
CAMPUS DESIGN FRAMEWORKS

Sustainability

- All aspects of the Campus Plan and Design Guidelines considered UBC's policies and commitments to sustainability.
- The Design Guidelines promote the improvement of public realm elements when designing new and renewal projects, especially:
 - *Streetscapes* to integrate movement and place-making
 - *Commons* to facilitate social engagement and learning among all members of the campus community

Cultural Resources

- Conserving historic cultural resources—buildings, landscapes and other designed features—is key to UBC realizing its vision as a place of stature that is responsible to future generations.
- UBC Vancouver's cultural resources, identified by the campus community, fall into broad themes, as illustrated by the maps below. For more information, see the background document, *UBC Cultural Landscape Study (2009)*.
- The Campus Plan identifies cultural resources to be conserved, where possible, and general management strategies for accepting change while retaining key historic values.
- Development proposals involving change, demolition or addition to any historic buildings will need to include a social, environmental and economic assessment.





HIGHLIGHTS OF CAMPUS DESIGN GUIDELINES

Design Guidelines help shape the detailed positioning and design treatment and materials palettes of all new capital projects including buildings and public realm.

Campus Furnishings

The goal is to have campus furniture become an integral part of landscape design. To create visual coherence throughout the campus, furnishings will be metal, such as stainless steel, or painted a dark charcoal colour. These furnishings are contemporary, simple and available from local suppliers.

Lighting

Continue the use of globe pole-top lights in the campus core and introduce modern light standards for special new areas.

Seating

New building and renewal projects will integrate ample outdoor seating to support socializing. Where new and replacement benches are required, the new standard will apply.

Garbage Cans

A new standard for garbage receptacles is being discussed with Plant Operations. The new standard will integrate recycling with garbage collection.

Bike Racks and Cages

The new standard outside buildings will be tubular steel bike racks. Additional secured, covered storage areas will be provided at several locations across campus.

Bollards

Standard bollards, already in use, will be used for vehicular control and night lighting applications.

Paving Palette

Paving on pedestrian priority corridors will use scored concrete or cast pavers to provide pedestrian comfort and safety and still allow emergency vehicle access. Where service vehicles are permitted, the paving informs drivers that pedestrians and cyclists have priority. The paving treatment of pathways will express a hierarchy of ways to move around campus, with important pathways having their paving continue across roadways.



Examples of lighting



Examples of seating



Examples of garbage cans



Examples of bike racks and cages



Examples of bollards



Examples of paving palette



HIGHLIGHTS OF CAMPUS DESIGN GUIDELINES

Architectural and Landscape Palettes by Character Districts

The Design Guidelines will specify what landscape style and architectural materials are most appropriate to bring continuity to each character district. Designers refer to these specifications as *palettes*.

Beaux Arts: Historic Core

This palette is informed by the existing mix of Collegiate Gothic, Arts and Crafts, and West Coast Regional buildings and their use of stone, stucco, and concrete.

The architectural palette is light, simple, and sophisticated: white brick with concrete, smooth granite, glass, and metal to complement existing buildings and highlight heritage buildings.

Landscape guidelines stress simple ordered plantings of traditional species that reinforce the symmetrical structure of the grid.



Modernist Campus

Outside the historic core, the campus has modernist buildings that exhibit a variety of architectural styles.

The proposed architectural palette, like Beaux Arts, has a strong emphasis on light and transparency. In addition, this palette has a wider range of secondary materials (metal panels, porcelain enamel and stone) and building exteriors can symbolically reference interior functions and purposes.

For landscaping, a wider range of plant materials, such as ornamental grasses, are encouraged while retaining the emphasis on mass plantings of limited species.

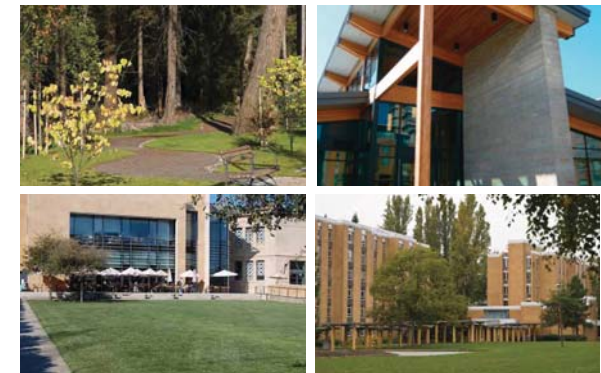


Forested Campus

At the western edge of campus, the forested district is predominantly residential in character.

For architecture, warmer, earth toned, and natural colours are encouraged, with primary materials being brick, painted concrete and terra cotta. Concrete, wood, metal and anodized aluminium are appropriate accent materials.

For landscaping, plant materials emphasize the use of native species, with coniferous trees dominating and massed understory plants or a simple meadow clearing below.



A Main Strategy of the Campus Plan

ENSURE A WELL-CONNECTED AND ACCESSIBLE CAMPUS

The Campus Plan will ensure a well-connected and accessible campus by:

- Creating a more pedestrian-friendly and cycle-friendly campus
- Further encouraging transportation alternatives to the car (walk, bus, bike) with great facilities
- Increasing universal physical accessibility of campus
- Identifying a simpler goods and service provider network that respects a pedestrian and bike-friendly campus

Create a Pedestrian/Cycle-friendly Campus by:

- Protecting a pedestrian-priority core
- Improving weather protection at building entries, across facades, and along key routes
- Welcoming cyclists everywhere, but managing conflict through cycling lanes, where appropriate
- Enhancing night lighting with priority on high-use pedestrian paths and building entrances

Support Alternatives to the Car by:

- Having public end-of trip bike facilities at hubs
- Exploring bike share programs for the campus
- Ensuring community shuttle service among new hubs and the central transit area
- Encouraging extended hours of service for food outlets in each hub
- Improving wayfinding information and routes to alternative transportation facilities

Increase Physical Accessibility of Campus by:

- Including universal design standards in the capital project review process
- Integrating universal access considerations into upgrades of highly-used pedestrian routes
- Designing primary entrances to new buildings to equally welcome people of all abilities
- Requiring parking spaces for people with disabilities near all buildings



Bikes parked at the North Bus Loop outside the Student Rec Centre



IMPLEMENTING THE PLAN

Successful implementation of the Campus Plan relies upon:

- Effective project review and permit approval processes for all capital projects initiated by specific academic departments, ancillary units or third party leaseholders
- Strategic initiatives to construct projects with campus-wide physical benefits, such as Public Realm Plan improvements
- An administrative commitment and flexibility to facilitate higher density mixed use projects through coordinated funding models
- Regular monitoring of development and construction, with systematic plan adjustments to remain relevant to a changing UBC context

